

CS Series Corporation Stops

1/2" TO 1" PVC and CPVC

KEY FEATURES

- True Union Thermoplastic Ball Valve with PTFE Seats
- Thermoplastic Injection Quill with Beveled Tip
- 316SS Chain and Hardware
- Variable and Customer Injector Lengths
- Ball Check Valve with FPM O-Rings
- Standard MNPT and Threaded True Union End Connections
- Pressure rated to 150 psi @ 70°F/10 Bar at 21°C

OPTIONS

- Flat Tip
- Socket True Union, Metric Socket or BSPT Threaded End Connections
- EPDM O-Ring Seals

MATERIALS

- PVC Cell Class 12454 per ASTM D1784
- CPVC Cell Class 23447 per ASTM D1784
- FPM O-Ring Seals



PVC



CPVC

TECHNICAL INFORMATION

SELECTION CHART

SIZE	MATERIAL	END CONNECTION	DIAPHRAGM	PRESSURE RATING
1/2" – 1" (DN15 – DN20)	PVC or CPVC	MNPT	FPM or EPDM	150 PSI @ 70°F 10 Bar @ 21°C Non-Shock

* Available with threaded ends to BS21.

Brisbane, Australia
www.monarchindustrial.com.au
www.monarchasiapacific.com.au

CS Series Corporation Stops

1/2" TO 1" PVC AND CPVC



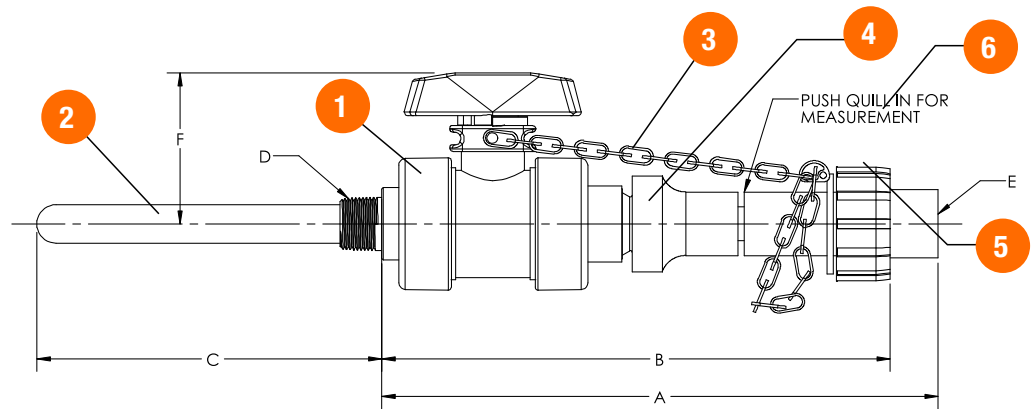
TECHNICAL INFORMATION, CONTINUED

PARTS LIST

1. Ball Valve - PVC or CPVC
2. Quill with Ball Check Valve and Hastelloy C Spring - PVC or CPVC
3. Stainless Steel Chain - 316SS
4. Quill Seal - FPM or EPDM
5. Union O-ring - FPM or EPDM
6. Union Nut

SPARE PARTS

- Valve
- Chain
- Replacement Quill Unit



DIMENSIONS*

VALVE SIZE in / DN	A in / mm	B in / mm	C in / mm	D	E	F in / mm
1/2 / 15	11.00 / 279	10.50 / 267	7.00 / 178	3/4" NPT	1/2" NPT	3.00 / 76
3/4 / 20	12.50 / 318	11.75 / 298	7.00 / 178	1" NPT	3/4" NPT	3.50 / 89
1 / 25	14.00 / 356	13.25 / 337	7.00 / 178	1-1/4" NPT	1" NPT	4.30 / 109

* Dimensions A, B and C with quill pushed into valve.

Brisbane, Australia
www.monarchindustrial.com.au
www.monarchasiapacific.com.au



Hayward is a registered trademark of Hayward Industries, Inc. © 2018 Hayward Industries, Inc.

USA: 1.888.429.4635 • Fax: 1.888.778.8410 • One Hayward Industrial Drive • Clemmons, NC 27012 • Email: hfcsales@hayward.com
 Canada: 1.888.238.7665 • Fax: 1.905.829.3636 • 2880 Plymouth Drive • Oakville, ON L6H 5R4 • Email: hflowcanada@hayward.com
 Visit us at: haywardflowcontrol.com



IV Series Injection Valves / IQ Series Injection Quills

1/2" TO 1" PVC, CPVC AND PVDF

KEY FEATURES

- Built-in ball check valve with Hastelloy C™ spring, with the IV check being rebuildable
- Threaded MNPT End Connections
- FPM O-Ring Seals
- 45° Bevel on Quill Tip
- Pressure rated to 150 psi @ 70°F

OPTIONS

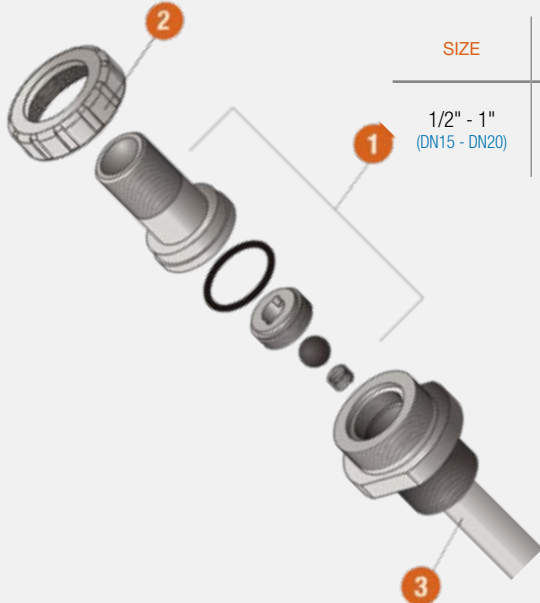
- Flat Bevel
- Socket End Connections
- EPDM O-Ring Seals

MATERIALS

- PVC Cell Class 12454 per ASTM D1784
- CPVC Cell Class 23447 per ASTM D1784
- PVDF
- FPM or EPDM O-Ring Seals

TECHNICAL INFORMATION

EXPLODED VIEW



SELECTION CHART

SIZE	MATERIAL	END CONNECTION	DIAPHRAGM	PRESSURE RATING
1/2" - 1" (DN15 - DN20)	PVC, CPVC, PVDF	NPT or Socket	FPM or EPDM	150 PSI @ 70°F 10 Bar @ 21°C Non-Shock

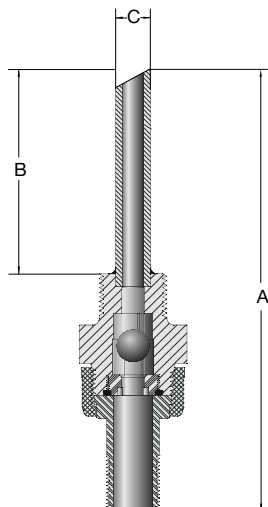
IV Series Injection Valves / IQ Series Injection Quills

1/2" TO 1" PVC, CPVC AND PVDF

TECHNICAL INFORMATION, CONTINUED

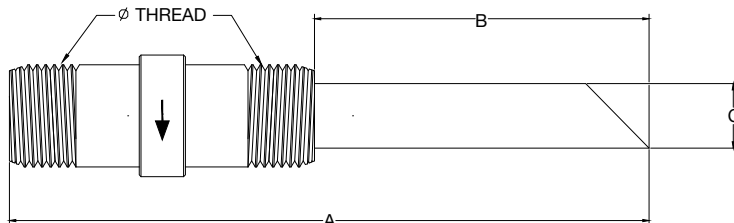
IV SERIES PARTS LIST

1. Check Valve
2. Union Nut
3. Quill



IQ SERIES PARTS LIST

1. Check Valve
2. Quill



VALVE DIMENSIONS (INCHES / MILLIMETERS)

CONNECTION SIZE in / DN	A in / mm	B in / mm	C in / mm
1/2 / 15	8.50 / 216	4.00 / 102	0.54 / 14
3/4 / 20	8.50 / 216	4.00 / 102	0.67 / 17
1 / 25	8.50 / 216	4.00 / 102	0.84 / 21

QUILL DIMENSIONS (INCHES / MILLIMETERS)

CONNECTION SIZE in / DN	A in / mm	B in / mm	C in / mm
1/2 / 15	5.50 / 140	3.00 / 76	0.54 / 14
3/4 / 20	6.10 / 155	3.00 / 76	0.67 / 17
1 / 25	7.90 / 200	4.00 / 102	0.84 / 21



Brisbane, Australia
www.monarchindustrial.com.au
www.monarchasiapacific.com.au



Hayward is a registered trademark
of Hayward Industries, Inc.
© 2018 Hayward Industries, Inc.

USA: 1.888.429.4635 • Fax: 1.888.778.8410 • One Hayward Industrial Drive • Clemmons, NC 27012 • Email: hfcsales@hayward.com
Canada: 1.888.238.7665 • Fax: 1.905.829.3636 • 2880 Plymouth Drive • Oakville, ON L6H 5R4 • Email: hflowcanada@hayward.com
Visit us at: haywardflowcontrol.com