

PBV Series Back Pressure Valves

1/4" TO 2" PVC, CPVC, PP AND PVDF

KEY FEATURES

- Available in PVC, CPVC, PP or PVDF Body with Noryl™ Molded Dome
- PTFE/EPDM Diaphragm
- Spring: 10 – 150 psi (Spring pre-set: 50 psi)
- 304 Stainless Steel Bolting
- FNPT Threads
- Anti-Siphon Function
- Adjustment Screw with Slot
- PVC, CPVC and PVDF rated to 250 psi @ 70°F / 17.2 Bar at 21°C, PP rated to 150 psi @ 70°F / 10 Bar at 21°C

OPTIONS

- ANSI or DIN / EN Threaded, Socket, True Union Socket or Flanged End Connections
- 0 - 50 psi and 10 - 250 psi Springs
- PTFE/FPM Diaphragm

MATERIALS

- PVC Cell Class 12454 per ASTM D1784
- CPVC Cell Class 23447 per ASTM D1784
- PP per ASTM D4101
- PVDF



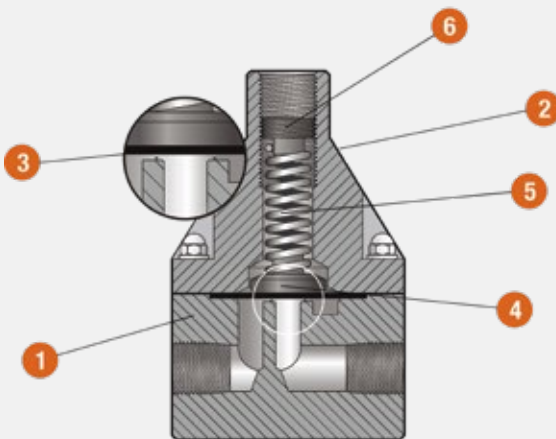
HAYWARD
BACK PRESSURE VALVE
SIZE: 1" FNPT
BODY: PVDF
DIAPHRAGM: PTFE/EPDM
RATING: 10 - 150 psi
Serial #: 1175010
Series: PBV



Certified to
NSF/ANSI 61 & 372

TECHNICAL INFORMATION

DETAILED VIEW



SELECTION CHART

SIZE	MATERIAL	END CONNECTION	DIAPHRAGM	PRESSURE RATING
1/2"-2"	PVC, CPVC, PP, PVDF	FNPT, Socket, Flange, TU Socket	PTFE/EPDM	10-150 psi, 0-50, 10-250

Brisbane, Australia
www.monarchindustrial.com.au
www.monarchasiapacific.com.au

PBV Series Back Pressure Valves

1/4" TO 2" PVC, CPVC, PP AND PVDF



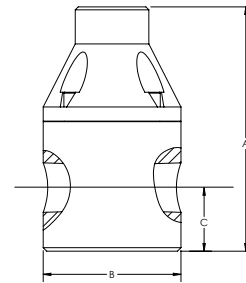
TECHNICAL INFORMATION, CONTINUED

PARTS LIST

1. Valve Body - PVC, CPVC, PP or PVDF
2. Dome - Noryl™
3. Diaphragm - PTFE/EPDM or PTFE/FPM
4. Compressor
5. Spring
6. Adjustment Screw

SPARE PARTS

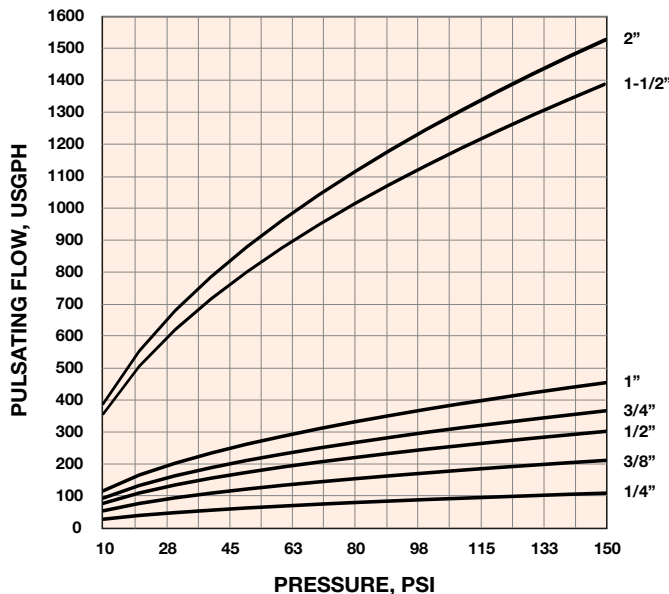
- Diaphragm and Spring
- Rebuild Kit: Diaphragm, Compressor, Adjustment Screw and Spring



DIMENSIONS (INCHES / MILLIMETERS)

VALVE SIZE in / DN	A in / mm	B in / mm	C in / mm
1/4 / 8	3.55 / 90	2.35 / 60	0.75 / 19
3/8 / 10	3.55 / 90	2.35 / 60	0.75 / 19
1/2 / 15	4.25 / 108	2.35 / 60	1.08 / 27
3/4 / 20	5.60 / 142	3.50 / 89	1.10 / 28
1 / 25	5.90 / 150	3.50 / 89	1.25 / 32
1-1/2 / 40	8.50 / 216	4.90 / 124	1.80 / 46
2 / 50	9.00 / 229	4.90 / 124	2.10 / 53

PERFORMANCE CURVE



Brisbane, Australia
www.monarchindustrial.com.au
www.monarchasiapacific.com.au

Hayward is a registered trademark of Hayward Industries, Inc. © 2018 Hayward Industries, Inc.

USA: 1.888.429.4635 • Fax: 1.888.778.8410 • One Hayward Industrial Drive • Clemmons, NC 27012 • Email: hfcsales@hayward.com
 Canada: 1.888.238.7665 • Fax: 1.905.829.3636 • 2880 Plymouth Drive • Oakville, ON L6H 5R4 • Email: hflowcanada@hayward.com
 Visit us at: haywardflowcontrol.com

RPV Series Pressure Relief Valves

1/4" TO 2" PVC, CPVC PP OR PVDF

KEY FEATURES

- Available in PVC, CPVC, PP or PVDF Body with Noryl™ Molded Dome
- PTFE/EPDM Diaphragm
- Spring: 10 – 150 psi (Spring pre-set: 50 psi)
- 304 Stainless Steel Bolting
- FNPT Threads
- Adjustment Screw with Slot
- PVC, CPVC and PVDF rated to 250 psi @ 70°F / 17.2 Bar at 21°C, PP rated to 150 psi @ 70°F / 10 Bar at 21°C

OPTIONS

- 2-port / 90°
- ANSI or DIN / EN Threaded, Socket, True Union Socket or Flanged End Connections
- 0 - 50 psi and 10 - 250 psi Springs
- PTFE/FPM Diaphragm

MATERIALS

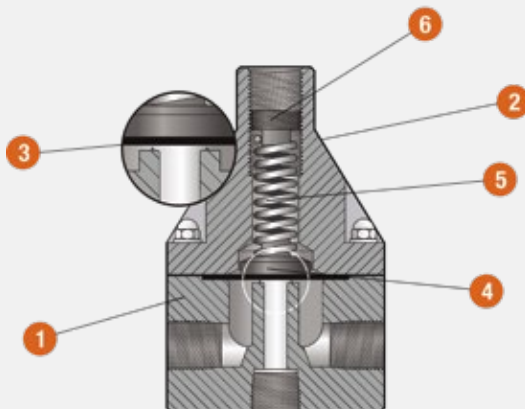
- PVC Cell Class 12454 per ASTM D1784
- CPVC Cell Class 23447 per ASTM D1784
- PP per ASTM D4101
- PVDF



Certified to
NSF/ANSI 61 & 372

TECHNICAL INFORMATION

DETAILED VIEW



SELECTION CHART

SIZE	MATERIAL	END CONNECTION	DIAPHRAGM	PRESSURE RATING
1/2"-2"	PVC, CPVC, PP, PVDF	FNPT, Socket, Flange, TU Socket	PTFE/EPDM, PTFE/FPM	10-150 psi, 0-50, 10-250

Brisbane, Australia
www.monarchindustrial.com.au
www.monarchasiapacific.com.au