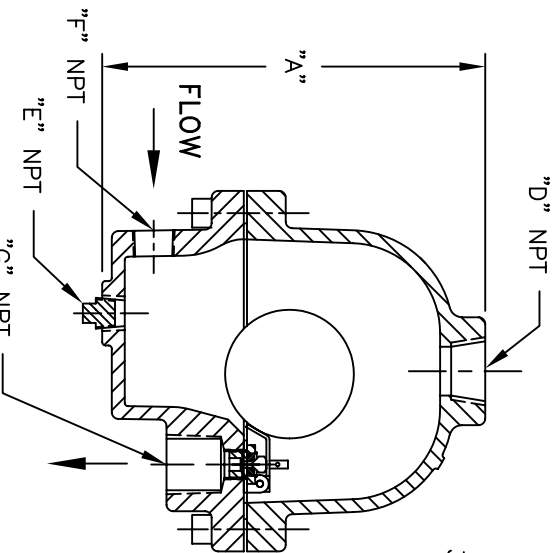
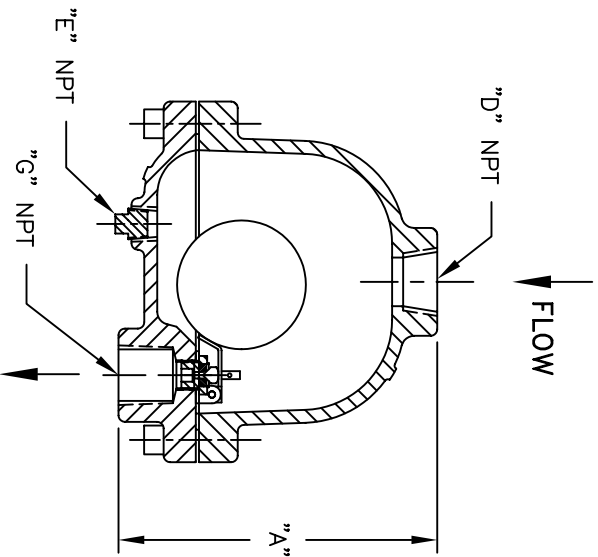
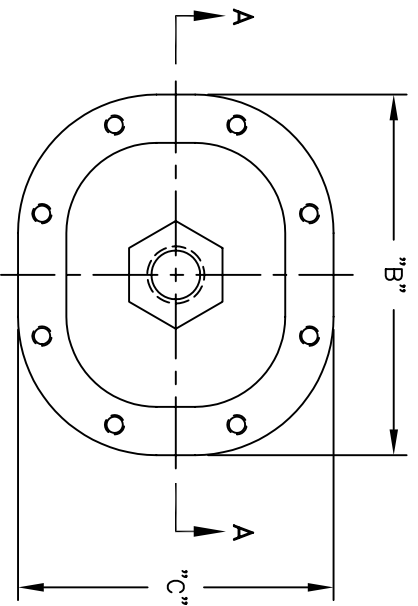


PART NO.	DIMENSIONS								WEIGHT	
	"A" IN. MM	"B" IN. MM	"C" IN. MM	"D" IN. MM	"E" IN. MM	"F" IN. MM	"G" IN. MM	LBS	KGS	
95CSACAN	6.25 / 159	7.00 / 178	6.13 / 156	1 / 25	3/8 / 10	---	1 / 25	17	7.7	
95CSAC-SIAN	7.50 / 191	7.00 / 178	6.13 / 156	1 / 25	3/8 / 10	1/2 / 13	1 / 25	19	8.6	



NOTES:

1. ALL DIMENSIONS ARE IN INCHES [MM].
2. DESIGN DATA:
DESIGN PRESSURE- 500 PSIG [34.4 BARS]
DESIGN TEMPERATURE- 450° F [232.2 °C]
MIN. DESIGN METAL TEMP.- -20° F @ 500 PSIG
[-28.9° C @ 34.4 BARS]
3. MATERIAL: BODY & COVER - CARBON STEEL, SA216 WCB
INTERNALS - STAINLESS STEEL

CERTIFIED FOR:
P.O. NO.:
S.O. NO.:
QUOTE NO.:
TAG NO.:

SECTION A-A
P/N: 95CSACAN

(SIDE INLET)
P/N: 95CSAC-SIAN

Brisbane, Australia
www.monarchindustrial.com.au
www.monarchasiapacific.com.au

ELECTRONIC FILE NAME: SD95ACAN.DWG
REF. ECR D507 DATE 10/18/05

UNAUTHORIZED USE, MANUFACTURE OR
REPRODUCTION IN WHOLE OR IN PART IS
PROHIBITED. DRAWING, DESIGN AND
OTHER DISCLOSURES PROPERTY OF
EATON FILTRATION, LLC



NAME TYPE 95-AC FLOAT DRAIN TRAPS
FOR COMPRESSED AIR & GAS SERVICE
CARBON STEEL

SIZE	DWG NO	DATE	CERT.	DATE	REV
A	FM	5/24/04	VAA	5/24/04	B

SD95ACAN